

TREK

WATERLOO, WISCONSIN | SINCE 1976

A scenic mountain landscape with two mountain bikers riding on a dirt trail. The lead rider is in the foreground, wearing a maroon long-sleeve shirt, light-colored shorts, and a grey helmet. The second rider is further back, wearing a dark green shirt and a blue helmet. The trail is a narrow dirt path winding through a grassy, rocky slope. In the background, there are large, rugged mountains under a clear blue sky. The sun is in the upper right corner, creating a lens flare effect. The overall atmosphere is bright and clear.

E-Caliber



Lightweight electric assist

+

Cross-country appeal

Standard MTB



- Traditional earn your turn experience
- Fitness required, all riders need similar fitness
- Equipment is light weight and efficient
- No maximum speed
- Very hard to keep up with full-powered E-bike
- Natural feeling
- Visually svelte

VS

High-Powered eMTB



- Fully assisted
- Minimum fitness required, all riders do not need similar fitness
- 50lb bike
- Geared to deliver trail bike experience
- Too powerful to be an equalizer with traditional bikes
- Sometimes unnatural feeling with torque of motor
- Motor and battery still visually large

Somewhere in between...

E-Caliber

Electric Cross-Country

- Unobtrusive assistance
- Some fitness required
- All riders do not need similar fitness
- Bike between 34-40lbs
- True equalizer with traditional pedal bikes
- Ride a bit faster or farther than typical
- Very natural feeling, smooth power delivery
- Looks like a traditional bike



Who is this for?



Positioning

Just right. There's a vast space between full electric assist and lightweight XC that appeals to the masses. With E-Caliber, the assist disappears entirely and returns you to that true mountain biking experience.

The Formula

E-Caliber



Trek's cross-country
experience and expertise
Supercaliber DNA



Just enough electric-assist
A lighter, removeable Fazua system

E-Caliber

Meaningful Features



IsoStrut



IsoStrut

- ⚡ Air Spring → Rider Variety & Tuning
- ⚡ Damper → Lockout & Control
- ⚡ Main Pivot → Pedals Efficiently & Bump Performance
- ⚡ Structural → Strong & Reliable



IsoStrut

Tunable & Full Lockout

Integrated Frame + Suspension

Pivotless stays

Forward Main Pivot /
Pedaling Efficiency



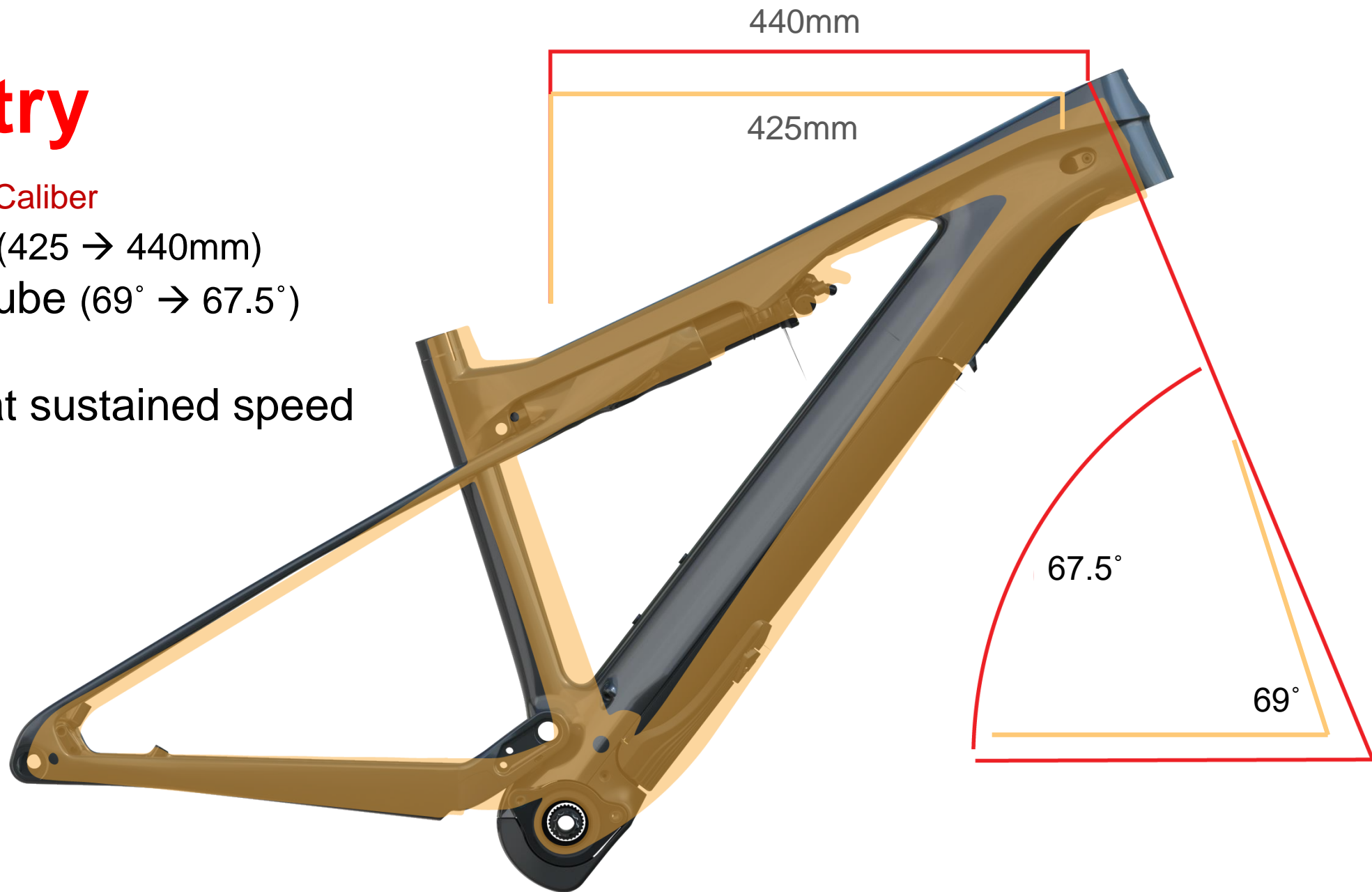
Geometry

Supercaliber vs E-Caliber

Longer reach (425 → 440mm)

Slacker headtube (69° → 67.5°)

More control at sustained speed





FAZUA

evATION

pedelec drive system

Battery Pack

Replaceable Li-ion battery pack
Energy content: 250 Wh
Voltage: 36 V
Weight: 1.38 kg



Drivepack

Removable motor unit
Power: 250 W (peak 450 W)
Weight: 1.92 kg



Remote

3 support modes
Bluetooth ready



Bottom Bracket

Torque: 55 Nm
Weight: 1.31 kg



New Remote

- Smaller, better ergonomics
- Turn the system on from remote, without removing the battery
- LED battery indicator
- Rain Mode can disable the touch interface making mechanical button sole control



Three different riding modes

Choose from three levels of assistance or pedal without any help, just as you would on a non-motorized bike.

≡ Breeze

Gentle, constant and 100 watts* strong tailwind even at low rider power.

≡ River

Progressive and very sporty mode, for a smooth riding experience! The strength of the support precisely follows your foot and your own power. Give a lot - and get a lot from the motor (max. 210 watts*)

≡ Rocket

Aggressive assistance that helps you to tackle the steepest sections even with moderate driver power (max. 250 watts*)

*default settings



Black Pepper – motor software 2.0

A better mountain biking tune

Power delivery over broader cadence range

More performance and efficiency

More responsive start

More differentiation among 3 support modes

Bluetooth LE connection to phone or bike computer



Max torque: 55Nm

Cadence range: 50-120rpm

Max power: 450 watts

Customize your ride

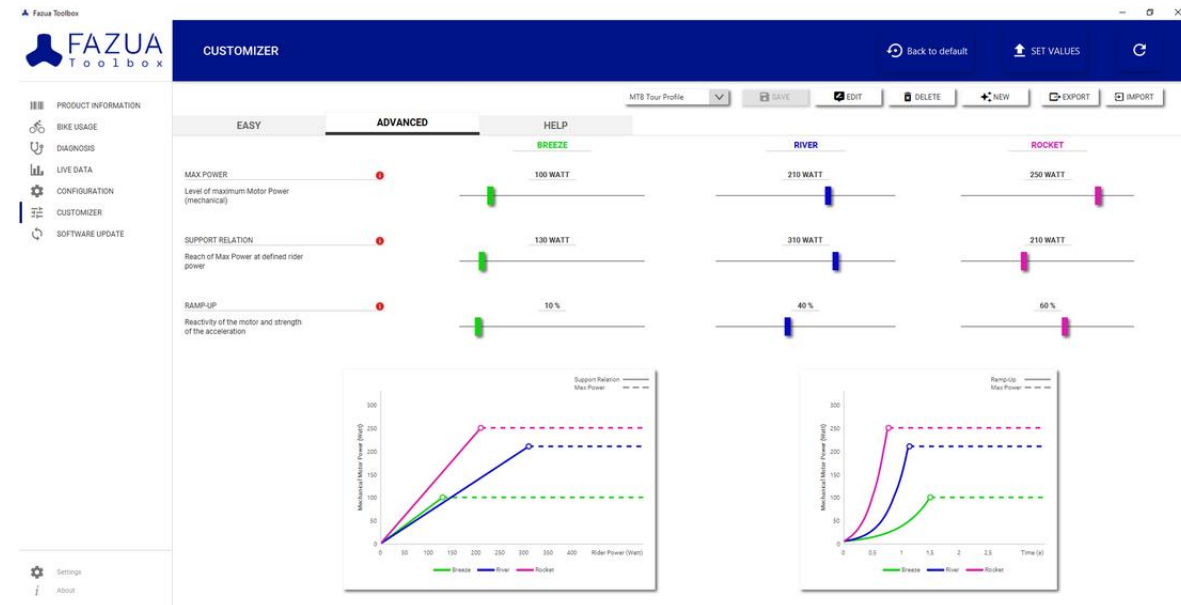
Users have the ability to adjust each riding mode to their needs

- Adjust Max Power, Support Relation and Ramp Up for a Custom Tune
- Select from Fazua presets or fully customizable tuner

Presets

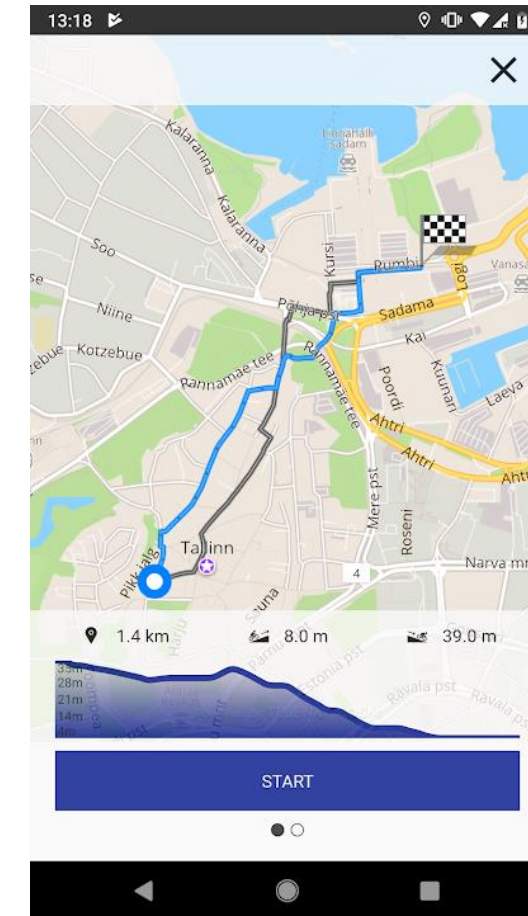
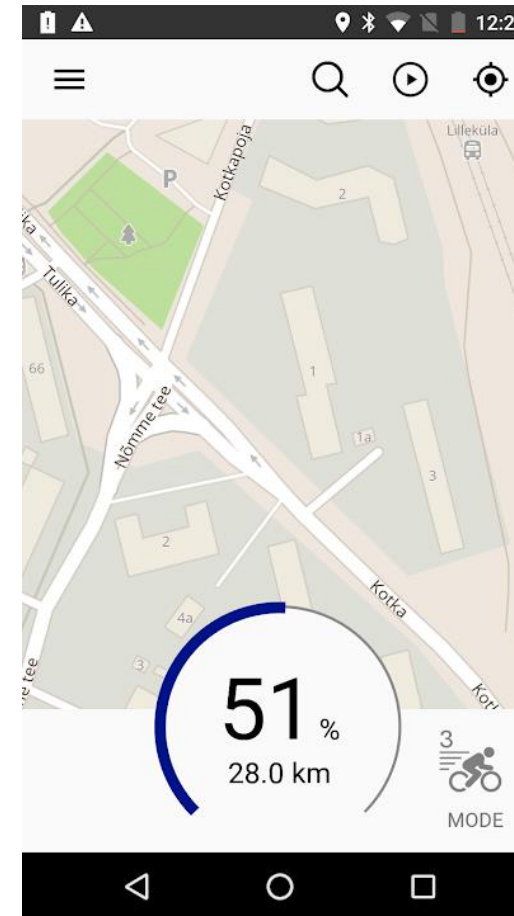


Fully Custom Tuner



Fazua App

- GPS navigation, tracking and trip information
- Motor power, remaining battery capacity, distance to empty, etc.
- Speedometer, cadence, rider power, rider torque, etc.
- Technical overview and battery charge information
- Support functions, incl. direct access to FAZUA Service
- Ability to share rides with friends
- Summaries and analysis of the data post-ride



E-Caliber

RANGE

River Moderate | 50km with 600m elevation gain

River Eco | 60km with 1000m elevation gain

Breeze Moderate | 60km with 1000m elevation gain

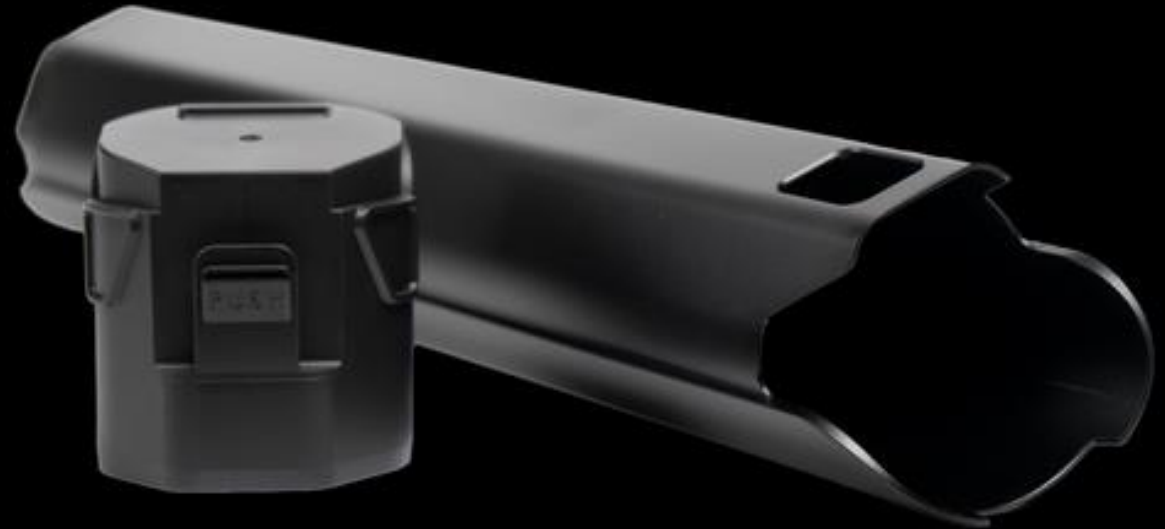
Breeze Eco | 70km with 1200m elevation gain

*assuming 200w rider input

**range affected by many factors including terrain, weight, tires, mode, etc

Two bikes in one

- Easily replace motor/battery unit with hollow downtube cover
- Lose 2.75kg/6lbs amount of weight
- Rides like a normal Supercaliber
- Hollow cover included with bike
- Use as storage space for food, repair kits or tools



Lightest electric full suspension bike

E-Caliber 9.9 XX1 AXS

34.75 lbs

15.75 kg

28.75 lbs with Fazua system removed

Lineup

E-Caliber

Not all bikes in all markets



XC Quiver Killer

- Full carbon frame
- Shimano 12spd drivetrain
- RockShox 35 Gold 120mm fork
- Kovee Comp Rapid Drive Wheels
- Dropper seatpost
- Shimano 4-piston brakes

E-Caliber 9.6



XC Rocket with Boost!

- Full carbon frame
- Shimano XT 12spd drivetrain
- RockShox SID 120mm fork
- Kovee Pro carbon Wheels
- Dropper seatpost
- Shimano XT 4-piston brakes

E-Caliber 9.8 XT





XC Rocket with Boost!

- Full carbon frame
- SRAM New GX 12spd drivetrain
- RockShox SID 120mm fork
- Kovee Pro carbon Wheels
- Dropper seatpost
- SRAM G2 RSC 4-piston brakes

E-Caliber 9.8 GX





The Fastest XC Weapon

- Full carbon frame
- Shimano XTR 12spd drivetrain
- FOX SC34 Factory 120mm fork
- Kovee XXX carbon Wheels
- XXX rigid seatpost
- Shimano XTR 4-piston brakes

E-Caliber 9.9 XTR



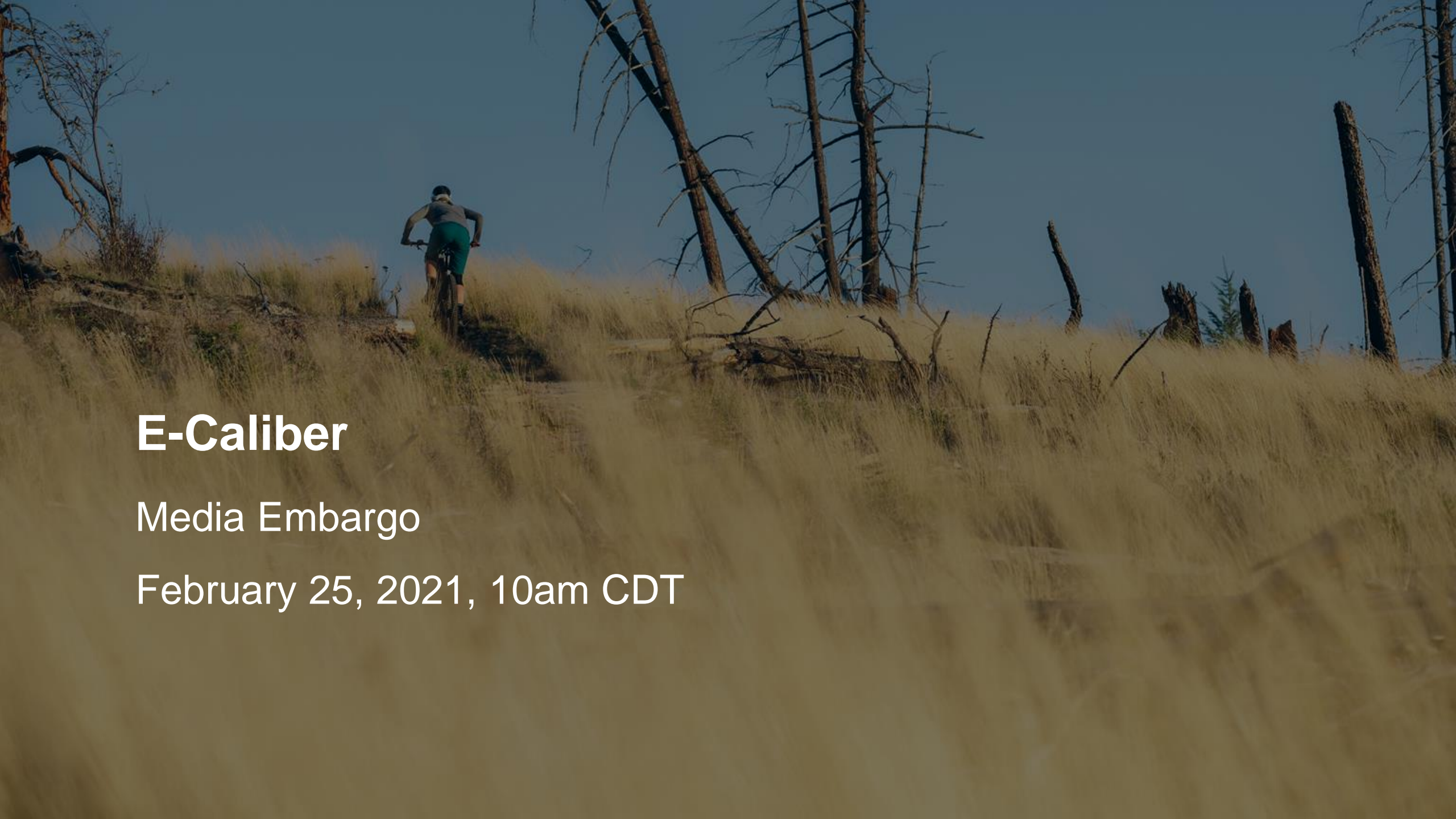


The lightest FS eMTB ever

- Full carbon frame
- SRAM XX1 AXS 12spd drivetrain
- RockShox SID Ultimate 120mm fork
- Kovee XXX carbon wheels
- XXX rigid seatpost
- SRAM G2 Ultimate 4 piston brakes

E-Caliber 9.9 XX1 AXS





E-Caliber

Media Embargo

February 25, 2021, 10am CDT

TREK

WATERLOO, WISCONSIN | SINCE 1976